

EasyOne Diagnostic vs. Frontline

	Diagnostic	Frontline
Test modes	FVC (expiratory), F/V Loop (inspiratory and expiratory), slow VC, MVV, Pre-Post measurement. Unit can be configured to meet NIOSH/OSHA and Disability reporting requirements.	FVC (expiratory), Pre-Post measurement
Parameters	FEV1, FVC, FEV1/FVC, FEV6, FEV1/FEV6, FEF25-75, FEF25, FEF50, FEF75, PEF, FET, FIVC, PIF, IVC, IRV, ERV, FEV1/VC, MVV, pre-post % variation, QC rating	FEV1, FEV6, FEV1/FEV6, FVC, FEV1/FVC, PEF, pre-post % variation, QC rating
Quality control	Requires 3 acceptable, reproducible maneuvers. (meets ATS standards)	Requires 2 acceptable, reproducible maneuvers. (meets NLHEP standards)
Automatic quality control	Quality control can also be overridden manually.	Automatic control is always active.
Trial storage and display	Can store and display the best, or the best 3 trials, including curves.	Stores and displays only the best trial and curve.
Report Configuration	Report can be customized for curve type and size.	Report is fixed, showing the smaller sized FV and VT curves.
Predicted Values.	Can choose from several sets of adult and pediatric normals	NHANESIII normals only are used
Curve Display	Displays a full flow-volume curve on the display after each trial.	Displays only numerical results.

EasyOne™ Plus Test Modes and Parameters

FVC test:

FVC	FEF75
FEV1	FEF50
FEV3	FEF25
FEV6	FEF25-75
FEV1/FVC	PEF
FEV1/FEV6	FET
FEV1/VC	
FEV1var	
FEV6var	
FVCvar	

FVL test (add. to FVC):

FVC
PIF
FIF75
FIF50
FIF25
Tidal Breathing

SVC test:

VCmax
VCin
VCex
IC
ERV
IRV
VT
Rf

MVV test:

MVV
BPM

Meets NIOSH / OSHA and SSD Guidelines
Meets 2005 ATS / ERS Spirometry Standards
The EasyOne Spirometers meet NLHEP Spirometry Review Process.

Specification and Technical Data

Dimension:	3.3 x 6.2 x 1.7 inches
Weight:	9 ounces
Measuring Accuracy:	Volume: ± 2% or 0.050 l Flow: ± 2% or 0.020 l/s PEF: ± 5% or 0.0200 l/s MVV: ± 5% or 5 l/min
Resolution:	Volume: > 1 ml Flow: 4 ml/s
Measuring range:	Volume: ± 12 l Flow ± 16 l/s
Resistance:	approx. 0.3 cm H ₂ O/l/s
Display:	64 x 160 pixel graphic display
Data entry:	14-key keyboard
Power supply:	(2) AA batteries
Battery service life:	400 tests approx.
Data memory:	700 tests approx.

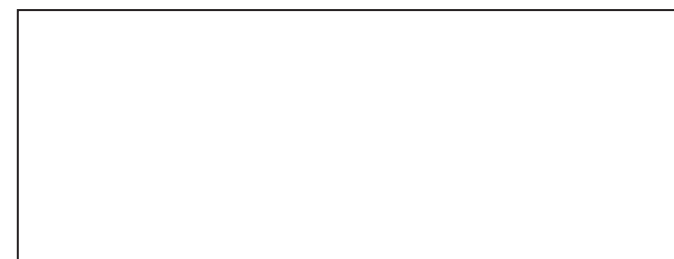
Print out:	direct to printer or via PC, plain paper
Data communication:	direct: printer with EasyWare™ and EasyWare Lite to PC and beyond
Languages:	English, French, Spanish, Italian, German
Predicted values:	NHANES III, Knudson 1976, Knudson 1983, Crapo, Morris, Cherniak, Berglund, ERS (ECCS), Roca, Austria, Gulsvik, Hedenstroem
	Pediatrics: Zapletal, Dockery, Hsu, Polgar

ndd advantage:

- not influenced by temperature, humidity or barometric pressure
- no calibration, simple 3L cal-check
- no cleaning, no maintenance
- simple and economic consumables
- easy to operate with simple operator prompts
- high accuracy for low flows
- no down time
- toll free technical support
- 3 year exchange warranty



n d d Medical Technologies
Two Dundee Park
Andover, MA 01810
978-470-0923 (fax 0924)
www.nddmed.com



Copyright © 2010 n d d Medical Technologies. All Rights Reserved



EasyOne Plus

The new standard in spirometry
Easy, Fast, Reliable, Accurate



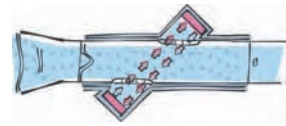
TrueFlow
makes the difference

To Purchase, Visit [Foremost Equipment.com](http://ForemostEquipment.com) or call 1-866-463-3522



n dd true flow technology

- ultrasound transit time measurement
- n dd true flow is absolute flow (not influenced by contamination, humidity, droplets or temperature)
- n dd true flow is used as OEM for major manufacturers (ventilators, anesthesia, spirometers, etc....)

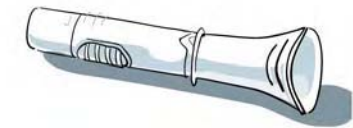


Display

- 5 lines of clear text
- guidance: Quality Assurance and Quality Grades
- instant results and interpretation

Low operating costs

- no calibration (simple 3L cal-check)
- no maintenance
- no down time



spirette™

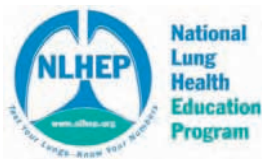
- simple, comfortable fit for adults and children
- hygienic, single patient use disposable for contamination control
- no sensor elements



CE 0120

Proven worldwide

- by NASA, MIR programs for crew monitoring in space
- ATS, ERS, CSA, JAPAN, FDA, CE, NIOSH, OSHA, GOLD, BOLD, Platino, NLHEP
- pharmaceutical, clinical and marketing studies
- top references in USA, EU, Japan, Asia, Australia, Latin America, Canada



The EasyOne Spirometers meet NLHEP criteria for office-based testing

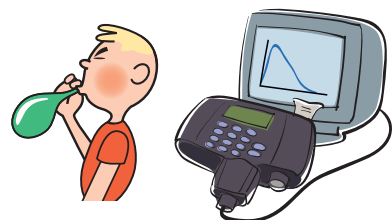
Keypad

- alpha-numeric
- data entry like cell phone



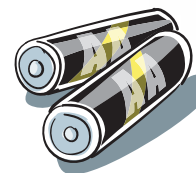
Cradle (base station)

- for standby positioning of EasyOne™ Plus
- for communication with EasyOne™ Plus
 - direct to printer
 - direct to PC with EasyWare™ or EasyWare™ Lite



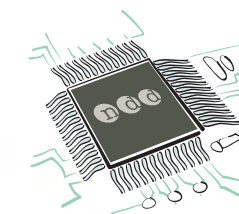
EasyOne Plus Screen™ PC connection

- real-time FV and VT curves
- pediatric incentive



Battery powered

- 2 AA standard batteries last for approximately 400 tests
- no recharging, no down time
- works everywhere, any time



Vast memory

- up to 700 subjects (first in - first out)
- secured memory, no accidental loss due to low battery
- multiple units may be used with one cradle and single copy of EasyWare™ PC software



Report

- plain paper, letter size, color or greyscale print
- direct USB connection
- export to 'excel', ascii, xml, etc...
- Pictbridge compatible

Other n dd products



EasyOne Pro

- Robust, calibration-free
- Color touch-screen interface
- Embedded PC function
- Highly portable



Easy on-PC

- PC guided spirometry
- pediatric incentive
- trending
- real time curves