

EchoPAC Dimension '06

Clinical workstation





PC - IDEAL-TIME 3D ECHO, REAL-TIME 3D ECHO

Archive Patient Imaging Browser Review Protocol Imaging Analysis Workflow Report Coding Baby Print Full
Select all Select page Analyze Save Delete Freeze Registration

Page 1 of 2

Patient Screen

Imaging

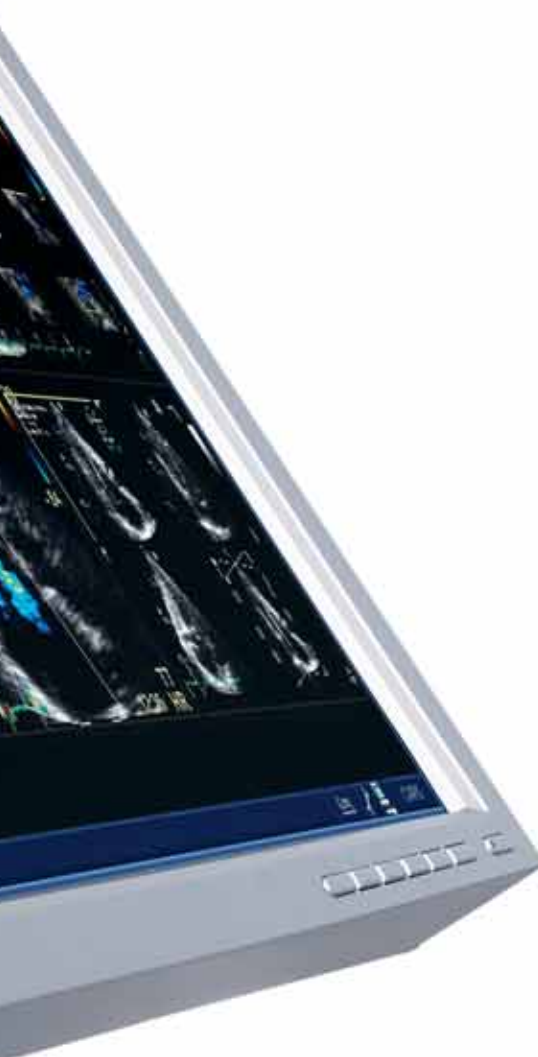
Workflow that works for you.

The freedom of choice extends to the echo lab with an information management solution that gives clinicians the ability to design their workflow according to the needs of their ultrasound lab.

As a comprehensive clinical workstation, the EchoPAC™ Dimension '06 gives you the choice of performing all your post-processing offline – even new multi-dimensional analyses – on images that retain the same superb image quality as those originally acquired and viewed on the ultrasound system.

So you can optimize workflow by deciding when and where an echo exam is accessed, reviewed or finalized, based on your scheduling needs and the experience and expertise of your team.

Because when it comes to increasing productivity, workflow is the key.



At the core of the Vivid™ family of cardiovascular ultrasound products is GE's legendary TruScan imaging platform.

With TruScan, the ultrasound data is digitally acquired and stored in a raw state to preserve the integrity of the data. The resulting pristine images can then be viewed, measured, optimized and analyzed from the ultrasound system or workstation at any time, without losing any of the original image quality.

The prod



activity edge.

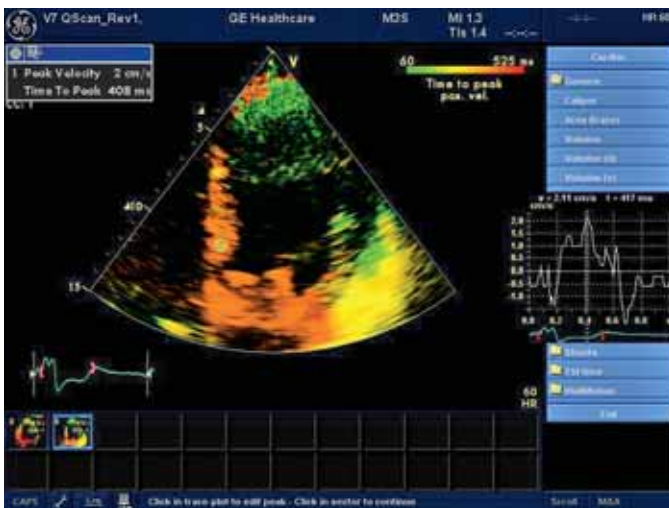


EchoPAC Dimension allows you to shift more of your analyses and workload from your ultrasound system to the workstation – freeing up your system for additional exams – for more efficient workflow, higher patient throughput and increased productivity.

From the point of data capture with any ultrasound system, the EchoPAC Dimension gives you a productivity edge, enabling you to:

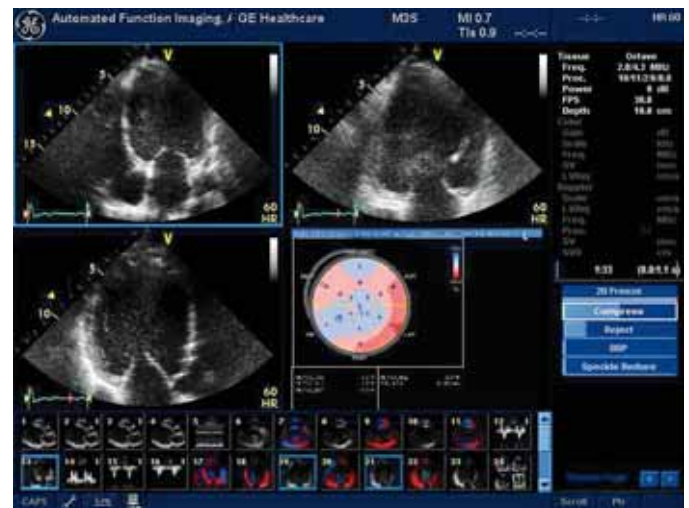
- Efficiently perform quantitative analyses, create reports and store images directly from your workstation.
- Access and store images in DICOM or raw data DICOM formats to meet medical digital communication standards.
- Import and export information with an exclusive DICOM Query/Retrieve function for workflow efficiency.
- Access patient exam data from multiple ultrasound systems, whether in the echo lab or a physician's office.
- Pull exam data from a centralized archive for immediate review of single- or serial-exam studies.
- Serve referring physicians with an exclusive side-by-side exam review capability, or share a view concurrently from two different locations.
- Send completed exams electronically to referring physicians in report formats via DVD, MPEGvue or export to a HIS.
- Quickly generate the echo findings report using the "Structured Findings" module with pre-defined text statements and an easy-to-navigate user interface.
- Perform image review and reporting side-by-side with a dual-monitor solution.
- Automatically generate and transfer billing codes to your HIS via HL7.

New dimensions in



Advanced TSI

Advanced Tissue Synchronization Imaging (TSI) on the EchoPAC Dimension '06 provides quantification of LV synchronicity information. Time-to-peak data derived from TSI's simple-to-use "red-light/green-light" visualizations let you quantify left ventricle synchronicity for heart failure patients, or those undergoing cardiac resynchronization therapy (CRT).



Automated Function Imaging (AFI)

Cutting-edge research moves into your clinical lab with Automated Function Imaging (AFI), an easy-to-use tool for assessing and quantifying left ventricle wall motion. AFI (derived from 2D strain) delivers reproducible, systolic, quantitative segmental and global assessments of the left ventricle – quickly and accurately.

The EchoPAC Dimension '06 offers review and analysis capabilities for multi-dimensional and 4D imaging, fully integrating with the multi-dimensional ultrasound data acquired on the Vivid 7 Dimension system.



echocardiography.

The EchoPAC Dimension '06 workstation gives you an array of advanced quantitative analysis tools, such as Tissue Velocity Imaging (TVI), Tissue Tracking, Quantitative Contrast, Strain Rate Imaging, Tissue Synchronization Imaging and IMT technology. These tools provide you with more cardiovascular information to enhance your diagnostic confidence.

And now, the EchoPAC Dimension '06 extends its functionality even further with multi-dimensional analysis and reporting capabilities made possible with the Vivid 7 Dimension ultrasound system and its multi-dimensional acquisitions.

The EchoPAC Dimension's multi-dimensional analysis and reporting capabilities include:

- 4D image display and navigator
- Tri-plane EF measurements
- Multi-plane imaging in 2D and color
- 4D post-processing
- 4D Tissue Synchronization Imaging (TSI)
- Bull's-eye report formats
- Full volumes
- 4D stress echo data
- 9 Slice
- Advanced TSI
- Automated Function Imaging (AFI)

© 2006 General Electric Company – All rights reserved.
GE Healthcare, a division of General Electric Company.

General Electric Company reserves the right to make changes in specifications and features shown herein, or discontinue the product described at any time without notice or obligation. Contact your GE representative for the most current information.

GE, GE Monogram, Vivid™ and EchoPAC™ are trademarks of General Electric Company.

Healthcare Re-imagined

GE is dedicated to helping you transform healthcare delivery by driving critical breakthroughs in biology and technology. Our expertise in medical imaging and information technologies, medical diagnostics, patient monitoring systems, drug discovery, and biopharmaceutical manufacturing technologies is enabling healthcare professionals around the world to discover new ways to predict, diagnose and treat disease earlier. We call this model of care “Early Health.” The goal: to help clinicians detect disease earlier, access more information and intervene earlier with more targeted treatments, so they can help their patients live their lives to the fullest. Re-think, Re-discover, Re-invent, Re-imagine.

GE Healthcare
9900 Innovation Drive
Wauwatosa, WI 53226
U.S.A.

www.gehealthcare.com



imagination at work