

CareCenter MD™

The first PC-based, wireless,
diagnostic workstation





The comprehensive and cutting-edge ECG and Stress solution for today's physicians.

Cardiac Science, the company behind the trusted Burdick® and Quinton® brands, now offers an easy-to-use, customizable, and expandable solution that's ready to grow with your practice.

CareCenter MD™ is a multimodality PC-based wireless diagnostic workstation, designed to make your workflow much easier.

All the features you've been hoping for are here:

- + *Wireless data acquisition* between patient and workstation means safety, comfort, and confidence for your patients and staff.
- + *Advanced connectivity* streamlines your work, with or without an electronic medical records (EMR) system.
- + *Shared patient database* for both ECG and stress testing means no re-entry of patient data.
- + *One-button navigation* speeds you through each test; it's very intuitive.
- + *Scalable design* makes adding additional modalities a breeze (as they become available).

Choose CareCenter MD for a better clinical solution with results you can trust.

A reliable product from a company you trust. Physicians around the world trust the heritage of the Burdick and Quinton product lines. That's why Cardiac Science is the market leader in noninvasive cardiac diagnostic technology with more than 65,000 devices delivering proven performance in a variety of clinical environments.



Optional Bluetooth® wireless data acquisition eliminates clumsy wires, and allows patients and equipment to be placed where you want – enhancing safety and comfort. Plus, multiple Bluetooth acquisition devices can be paired with a single PC, and multiple PCs can pair with a single device. So you can create a solution with the exact equipment you need, exactly where you need it.



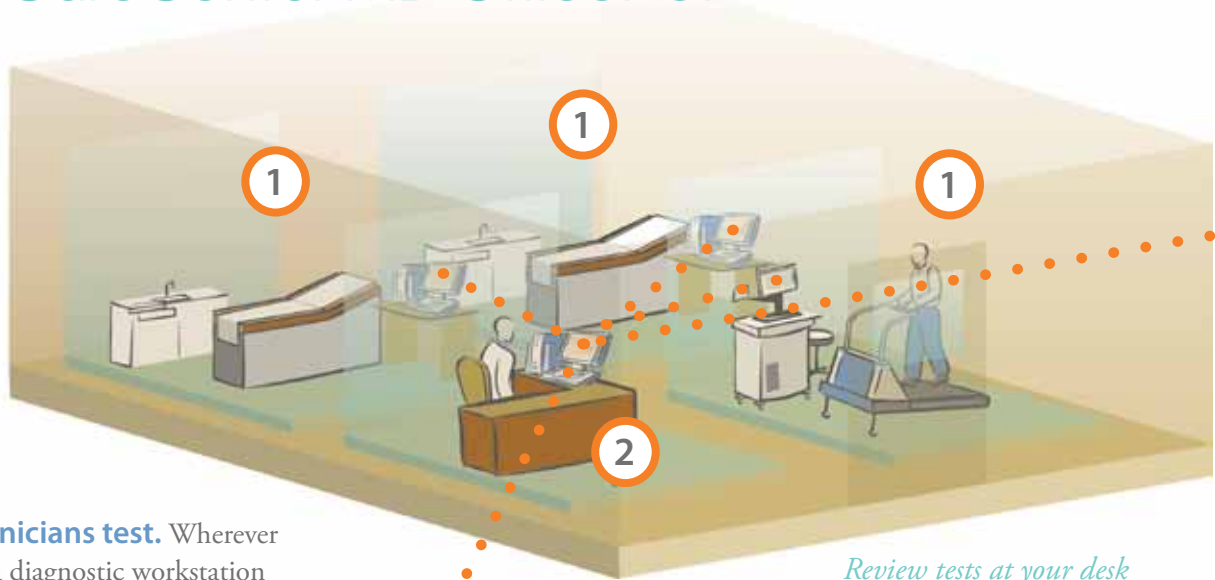
Actual size: Bluetooth wireless ECG and Stress data acquisition device.

CareCenter MD at a glance

Features	Benefits
Wireless data acquisition	Safety, comfort, and confidence for your patients and your staff.
One-button navigation	Easy-to-learn graphical user interface; common for all modalities.
Hook-up verification screen	At-a-glance indication of proper electrode hook-up for better accuracy.
Scalable design	Designed to make adding future modalities a breeze.
Flexible customization	Modify and save screen views for each user and select reports that best fit your needs.
EMR connectivity	Import demographics and orders; export results to your EMR for future access.
CareCenter MD OfficeNet	Access all patient data and results throughout your network or from remote locations.
CareCenter MD Online	View live patient tests from a remote location and comment via instant messaging.

CareCenter MD – advanced connectivity options designed for today’s physician practice.

CareCenter MD OfficeNet

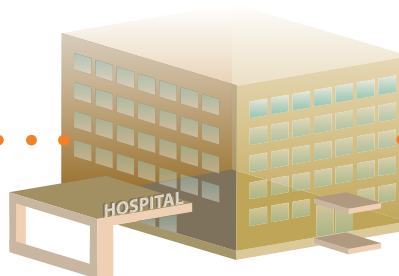


Review tests at your desk

1 Clinicians test. Wherever there’s a diagnostic workstation and module, clinicians can take ECG and stress tests free from wires between patient and workstation. Set up dedicated rooms or move your workstation wherever you need it to be. The shared patient database eliminates the need to re-enter patient data.

- 2 Physician reads.** You can read, edit, confirm, and save full, completed patient tests from your desk 30 seconds after the test is complete. Even better:
- + Open multiple previous ECG or stress tests and compare them simultaneously.
 - + Customize your workspace with the screen views and reports that work best for you and your staff.

3 Physician can access at home. Or the clinic. Or hospital. Or anywhere you have access to a secured network.



Access tests anywhere you have a secured connection

Why the asterisk? *

CareCenter MD has a first-of-its-kind feature. For a little extra, add CareCenter MD Online for live consultations. Your cardiologist can log on, watch, and comment on the tests via instant messages – as they happen.



Cardiologist over-reads a full test, not a PDF

- 4** **Physician seeks a consult.** When you need a consult for a high-risk patient, email the full, encrypted test to a cardiologist who has CareCenter MD software. The cardiologist opens a complete test file with full disclosure, measurement tools, and analysis capability. Your reply is an annotated, confirmed over-read.

Advanced networking capabilities – with or without an EMR.

- + CareCenter MD connects to the leading EMRs and other health information systems via HeartCentrix® or an HL7 interface, so you can save, review, confirm, and combine test results with permanent patient records.
- + If you haven't yet implemented an EMR system, CareCenter MD can be the perfect first step to help you get familiar with electronic patient records and all the flexibility a PC-based solution can offer.



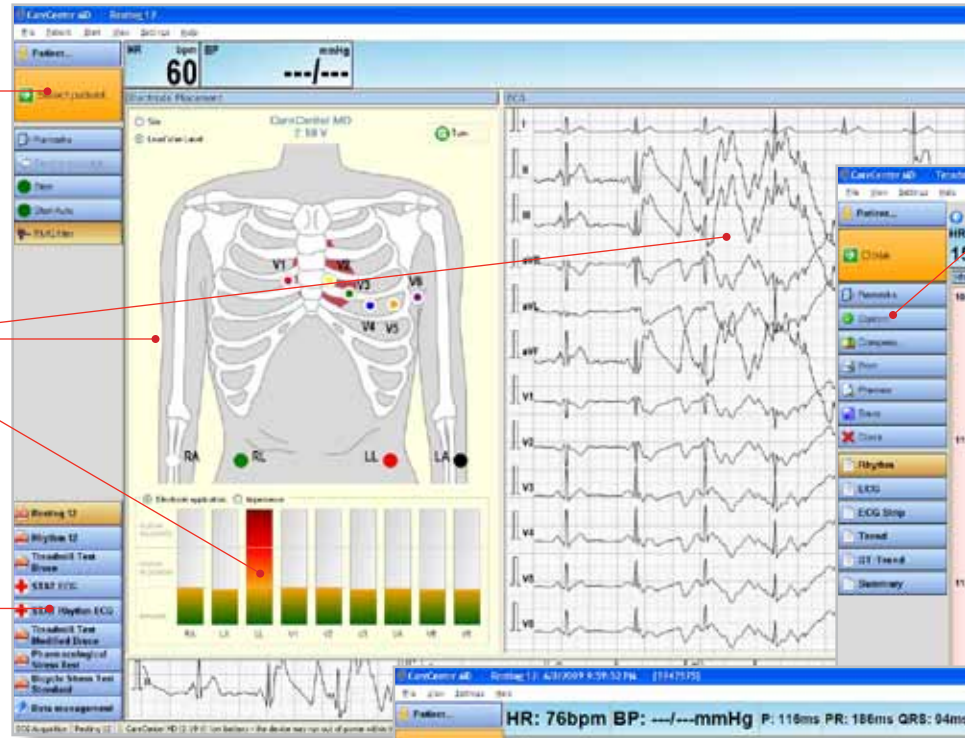
You don't need an EMR to be networked

Finally, a diagnostic workstation solution that's easy to use.

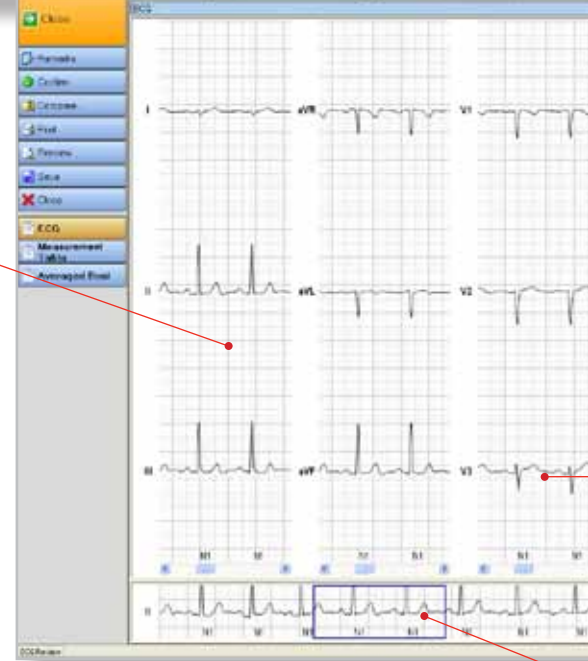
Simple navigation: One button navigation speeds you through each test. This button changes personality depending on where you are in the test and helps guide you step by step.

Multi-view hookup screen: Color-coded electrode placement diagram, dynamic "noise level" bar graph, and real-time ECG waveform display all help identify hook-up problems before you start the test.

Test procedure buttons: Select the test procedure to perform. You can also change the order, add or delete tests, and change the name of any test.



Post-test ECG view: See the full 10 seconds of recorded ECG, not just the last 2.5.



- + One PC-based diagnostic workstation for ECG, Stress, and future modalities means just one simple system to learn, and no re-entry of patient information.
- + The easy-to-read layout has a full display of key patient and test data. Plus, you have fast access to advanced display and analysis tools with just a mouse click.
- + Flexible display options let you select from a variety of screen views on-the-fly and then save the one you want.
- + Multiple report formats let you choose the ones that work best for you.

Context-sensitive task buttons: Access additional tasks, features, views, and reports with just the click of a button.

Strip review: Select captured strips and review full disclosure on any lead(s) from the beginning of the test.

Automatic worst case: The system automatically captures and reports worst case during a stress test.

Trend graph: At-a-glance view of key parameters throughout the test. The vertical blue progress bar is synchronized with the ECG display shown to the left.

Analysis results: See full test results including measurement values, diagnosis statements, and interpretation summary. Edit diagnosis and interp statements manually or from a drop-down menu of pre-defined statements prior to confirmation.

On-the-fly lead views: Simply right-click on any ECG waveform display and select a different view. You can even create new lead views and save a favorite as your default.

ECG view box: Synchronized with the portion of the 10-second recording displayed above. Drag left or right to see any section.



When your CareCenter MD is under warranty or service contract, you can expect:

- + Comprehensive telephone support. Get expert technical and clinical support when you need it.
- + Dynamic remote access support.* Maximize your uptime with well-maintained equipment.
- + Remote installation and configuration check.* Concentrate on patient care while we make sure everything is set up properly.
- + A custom configuration session. Configure your screens the way that make the most sense for you – with our help!
- + Web-based training. Swiftly train new system users for optimal efficiency. One Web-based clinical training session included with purchase.
- + On-site treadmill repair (with purchase of a treadmill). Protect your investment with an on-site visit from one of our Microsoft-certified field service engineers.
- + Preventative and performance maintenance (with purchase of a treadmill). Identify potential system issues before downtime results.

* High-speed Internet connection required.



Service you can count on

CareCenter MD is designed to be easy to install and easy to use. We provide a simple software installation disk, quick reference card, and an in-service video.

To get you up and running quickly, we also offer support and training via the Internet for maximum flexibility with minimal office disruption. We can verify your installation and configuration remotely from your Web-connected PC, and we even offer live one-hour online clinical training sessions by request.

And for those with limited time and resources, our Professional Services team is ready to assist.

Call us at 800.679.8703 or contact your authorized Cardiac Science representative.

Cardiac Science Corporation • 3303 Monte Villa Parkway, Bothell, WA 98021 USA • 425.402.2000 • US toll-free 800.426.0337 • Fax: 425.402.2001 • care@cardiacscience.com
Orders and Customer Care (US and International) • 425.402.2000 • US toll-free 800.426.0337 • Fax: 425.402.2001 • care@cardiacscience.com
Technical Support • (US) Fax: 425.402.2022 • technicalsupport@cardiacscience.com • <http://websupport.cardiacscience.com/webchat/> • (International) international@cardiacscience.com
Cardiac Science International A/S • Kirke Vaerloesevej 14, DK-3500 Vaerloese, Denmark • +45.4438.0500 • Fax: +45.4438.0501 • international@cardiacscience.com
United Kingdom • The Manse, 39 Northenden Road, Sale, Manchester, M33 2DH, United Kingdom • +44.161.926.0000 • uk@cardiacscience.com
France • Parc de la Duranne, 565, Rue René Descartes, F-13857 Aix-en-Provence Cedex 3, France • +33.4.88.19.92.92 • france@cardiacscience.com
Central Europe (D, A, CH) • Oskar-Schindler-Strasse 3, D-50769 Köln, Germany • +49.221.33734.300 • centraleurope@cardiacscience.com
China • 6/F South Building, 829, Yi Shan Road, Shanghai 200233, China • +86.21.6495.9121 • china@cardiacscience.com