

CardioVive DM AED

An intuitive AED with manual override and ECG monitoring

Defibrillator

The Burdick CardioVive DM AED is designed specifically for medical professionals. The device's dual mode operation gives physicians the option to switch from AED to manual defibrillation and continuous cardiac monitoring.

Additionally, the minimally trained users will find that the simple, automated voice-prompts give easy-to-follow defibrillation instructions.



Advanced Functions Put the Physician in Charge

The flexibility of manual and external defibrillation options makes the CardioVive DM an ideal AED for the physician's practice. The device offers manual override features allowing the physician total control over patient care. While in the manual mode, the device communicates a comprehensive view of the patient's status including heart rate, ECG rhythm, number of shocks delivered, impedance meter, continuous event clock, CPR running time and text commands. This gives the physician vital information to make critical

decisions. Plus, the easy-to-read ECG monitoring screen displays patient's ECG on the industry's first color AED screen. The CardioVive DM also has an optional 3-lead monitoring cable providing Lead II viewpoint for continuous cardiac monitoring. In the semi automatic mode, the system will verbally guide even novice staff safely through the sudden cardiac arrest, using the 2005 American Heart Association/European Resuscitation Council CPR and Emergency Cardiac Care Guidelines.

RescueReady

The Burdick CardioVive DM performs automatic self-tests to ensure it is RescueReady®

- Proprietary RescueReady technology automatically tests the battery, system components and pre-connected electrodes daily
- Weekly, the systems tests the battery, electrodes, internal electronics and conducts partial energy charge
- Monthly, the CardioVive DM AED performs an automatic full-charge test of high voltage circuitry
- The RescueReady status light changes from green to red if tests fail
- Pre-connected electrodes are stored inside the CardioVive DM AED, eliminating confusion and errors
- Pediatric capable¹

Administers the Appropriate Energy Level with Each Shock

Optimizing energy delivery is the key to successful defibrillation. The CardioVive DM AED provides customized energy with each shock it delivers.

- STAR™ Biphasic technology quickly assesses the victim, adjusts defibrillation parameters and delivers the most effective energy level
- When additional shocks are needed, the AED escalates the current generated to provide optimal energy delivery
- Software can be customized by a medical professional to follow defibrillation protocols for SVT, VT and VF

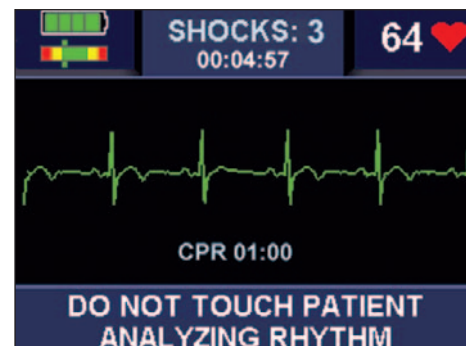
Features

- Allows physicians to switch from AED to manual defibrillation
- Simple and easy-to-use automated voice-prompts for the layperson
- Has industry's first ECG color display
- Patented, powerful algorithms and variable escalating energy
- Optional 3-lead continuous ECG patient monitoring

BURDICK®

CardioVive DM AED

TECHNICAL SPECIFICATIONS	
Dimensions	10.6" W x 12.4" D x 3.3" H (27 cm x 31 cm x 8 cm)
Weight	6.6 lbs (3.10 kg) including battery and electrodes base model
Defibrillator	Operation: Semi-automatic and manual; Waveform: Biphasic truncated exponential; Energy (J) range available: Escalating variable energy (VE) levels (105J to 360J); Number of protocols: 5; aligned with 2005 AHA/ERC guidelines; Factory default (Nominal): 200VE, second and subsequent shocks at 300VE; Controls: Single-button operation and manual override; Voice prompts: Comprehensive voice instructions guide user through rescue process; Text screen: Displays written instructions to guide user through rescue process; Indicators: RescueReady status, electrodes indicator, SmartGauge battery status, service indicator; Audible alerts: Voice Prompt, System Alert; Synchronized Shock: Built-in automatic synchronization feature; Pacemaker pulse detection: Yes; Programmable: Yes, via MDLink; Pediatric capability: Yes
Automated self checks	Daily: Electrodes, battery, internal electronics, SHOCK/CONTINUE button, software (no charge); Weekly: Electrodes, battery, internal electronics, SHOCK/CONTINUE button, software (partial charge); Monthly: Electrodes, battery under load, internal electronics, full energy charge cycle, SHOCK/CONTINUE button, software (full charge)
Event documentation	Internal memory: 60 minutes ECG data with multiple rescue capability; Playback: Windows® -based RescueLink software via PC; Communications: Infrared cable for PC with Windows; Clock synchronization: Precise synchronization of AED time to dispatch time
Electrodes	Supplied: Self-checking and pre-connected to AED; Type: Adult, disposable, pre-gelled, self-adhesive; Extended length of lead wire: 1.3m; Shelf life: 2 year; Gel surface area: 114 cm ² each
Battery	Type: Extended life lithium battery; Shelf life: 5 years; Battery Warranty: See Warranty Agreement for more information; Optional rechargeable battery
Environmental	Operating temperature: 0°C to +50°C (32°F to +122°F); Storage temperature (up to 1 week): -30°C to +65°C (-22°F to +149°F); Relative humidity: 5% to 95% (non-condensing); Atmospheric pressure: 57kPa (+15,000ft) to 103kPa (-500ft); Vibration and shock: IEC 68-2-29, 68-2-6 (sine), 68-2-64 (random); Free fall drop: IEC 68-2-32, 1 m; EMC: CISPR 11
Conforms to standards	Applicable Standards: UL-60601-1; CSA 22.2 No. 601.1-M90; IEC 60601-1; IEC 60601-1-2; IEC 60601-2-4; ANSI/AAMI DF-39, 2005 AHA/ERC Guidelines for CPR and ECC
Warranty	7 years for CardioVive unit; Lithium battery 1 year from date of installation or 12 hours of operation, whichever occurs first. Electrode pads are warranted until expiration date. Actual battery operating life may vary.



The CardioVive DM has industry's first ECG color display, which enhances its readability and usability.

Makes Hard Decisions and Safely Monitors Victim

The CardioVive DM uses the most advanced software algorithm in the industry and provides continuous patient monitoring before, during and after the cardiac episode.

- RHYTHMx® technology differentiates between shockable life-threatening cardiac rhythms, such as ventricular arrhythmias (VT/VF), and non-shockable cardiac arrhythmia (SVT) events
- The AED automatically synchronizes shock delivery with the electrocardiograph R-wave
- Post-resuscitation monitors the heart rhythm to instantly detect additional life-threatening arrhythmias

Warranty and Service Protect Your Investment

Your CardioVive DM AED is protected by a seven-year warranty. During this period, we provide a toll-free phone number for technical support and assistance.

Internationally please contact your local representative for further details.

* Call for other languages

¹ Intended for use on children up to eight years of age or weighing up to 55 lbs



ORDERING INFORMATION

92533-501 CardioVive DM AED, English*

Accessory Part Numbers:

9131-001	Disposable adult defibrillation electrodes (non-polarized)
9660-001	Disposable adult defibrillation electrodes (polarized)
9730-002	Pediatric electrode kit ¹
170-2145-001	Wall-mount wire rack
9144-001	Rechargeable battery
109-0021-404	Quick start CD
5550-003	AED Ready Kit
5111-001	CardioVive DM ECG Monitoring Cable
9044-001	Recharger Kit
010-1668-00	Replacement Battery for CardioVive DM

Corporate Office: Cardiac Science Corporation • 3303 Monte Villa Parkway, Bothell, WA 98021, USA
Phone: 800-777-1777, 608-764-1919 • Fax: 608-764-7188 • www.burdick.com • info@burdick.com

Authorized EU Rep: MDSS GmbH, Schiffgraben 41, D-30175 Hannover, Germany
Tel: +49 511 62 62 86 30 • Fax: +49 511 62 62 86 33

International Office: Kirke Vaerloesevej 14, 3500 Vaerloese, Denmark
Tel: +45-4438-0500 • Fax: +45-4438-0501

Due to continued product innovations, specifications are subject to change without notice. Burdick and CardioVive DM, RescueReady, Star, RhythmX are trademarks of Cardiac Science Corporation Other brands and products are trademarks of their respective companies.